



# PERLITE FOR HORTICULTURE

## 100% NATURAL

Perlite is a naturally occurring, volcanic rock. When furnaced at high temperatures, perlite “pops” and expands more than 10 times its original volume. The resulting, lightweight particles are made up of microscopic spheres with a porous, irregular surface that promotes plant growth.

Expanded perlite is used on its own for propagating, or is mixed with other ingredients, such as peat moss, coco coir, compost, and bark mulch, to make a sterile, weed-free growing media. Adding perlite lowers the bulk density of the mix and introduces pore spaces which hold moisture and nutrients and allow for optimal aeration and drainage of the root system.



## SUPREME PERLITE

*The Northwest's Leading Manufacturer of Horticultural Perlite*

A tradition of excellence founded in 1954, Supreme Perlite is the Pacific Northwest's oldest and largest perlite expander. Family-owned with operations in Oregon, Supreme Perlite is distributed throughout the northwestern U.S., western Canada, and into the Pacific Rim.

 503.286.4333

 [sales@perlite.com](mailto:sales@perlite.com)

 [perlite.com](http://perlite.com)

### Supreme Perlite

4600 North Suttle Road  
Portland, Oregon 97217

## NATURAL VOLCANIC PERLITE



### BENEFITS OF PERLITE

- 100% Natural
- Sterile
- Ultra-Lightweight
- Non-Toxic
- Permanent
- Incombustible
- Insulating
- Asbestos-Free
- Virtually pH-Neutral

### HORTICULTURAL USES

- Propagation of Seedlings
- Propagation of Cuttings
- Soil Conditioning
- Hydroponics
- Potting Soil
- Ecoroofs/Roof Deck Gardens
- Turf Enhancement
- Nursery Stock
- Hanging Baskets





# HORTICULTURAL PERLITE DATA

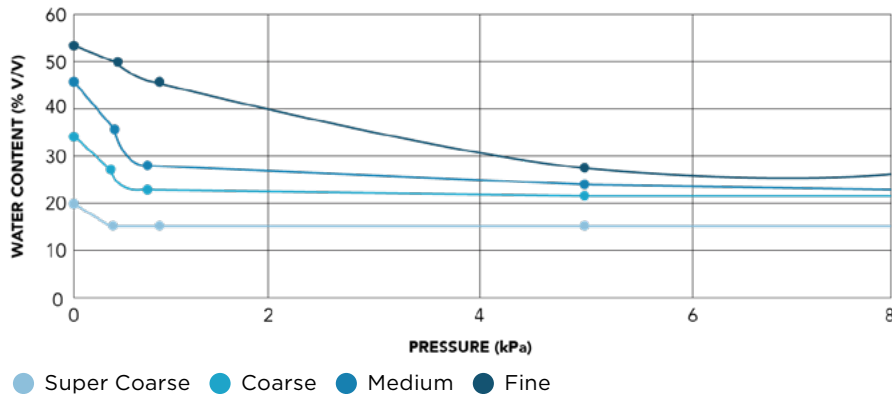
Supreme Perlite horticultural grade products are designed for both personal and professional use. Products are OMRI® Listed for organic agriculture and come palletized in 4 cubic foot bags or bulk super-sacks. Densities typically range from 4.5 - 7.0 lb/cu. ft. (70 - 110 kg/m<sup>3</sup>). Product specifications and availability are subject to change without notice. Please contact us for current sizes and technical support.

## AIR & WATER-HOLDING CHARACTERISTICS

PRODUCT GRADE	free air (% vol.)	water space (% vol.)	total porosity (% vol.)	water holding (wt./wt.)	infiltration rate	
					(in./hr)	(mm/s)
SUPER COARSE	33%	19%	51%	1.7x	278	2.0
COARSE	38%	20%	58%	2.0x	340	2.4
MEDIUM	39%	20%	60%	2.5x	178	1.3
FINE	16%	45%	61%	5.5x	132	0.9

*Independently tested and verified by Wallace Laboratories, El Segundo, CA.*

## WATER RELEASE CURVES



*Facts and figures represented are subject to manufacturing variations or may change without notice.*

## HORTICULTURAL GRADES (shown actual size)



**Super Coarse "XLP Grade"**

For maximum drainage & aeration.



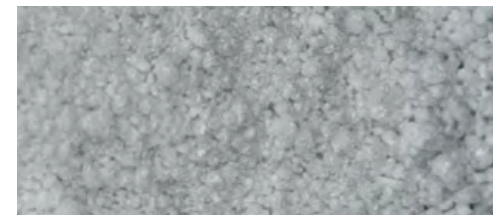
**Coarse "Propagation Grade"**

For balanced moisture-holding & drainage.



**Medium "Soil Mix Grade"**

For use with standard-sized plugs and liners.



**Fine "Plug Grade"**

For use with extra-fine peat blends, small plugs, and liners.

